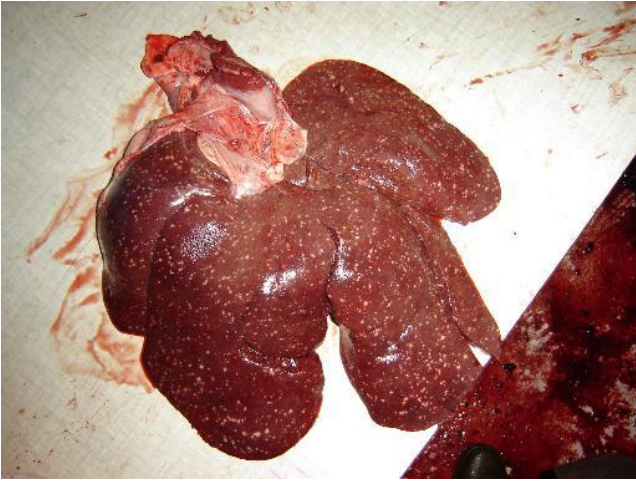


Annexe 2

Tuberculose sangliers



Hépatite tuberculeuse (sanglier)

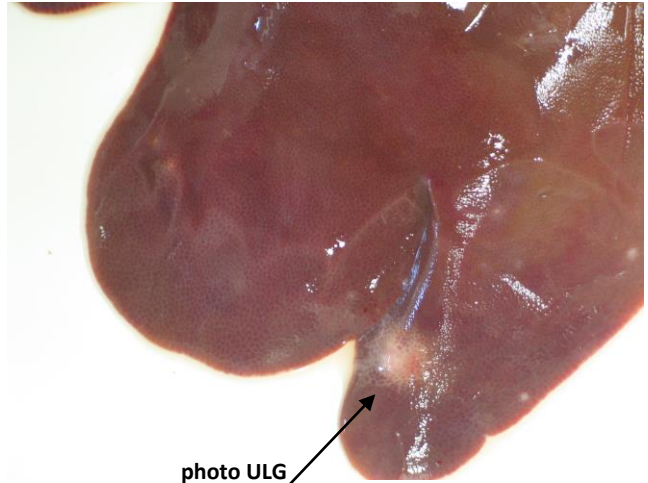
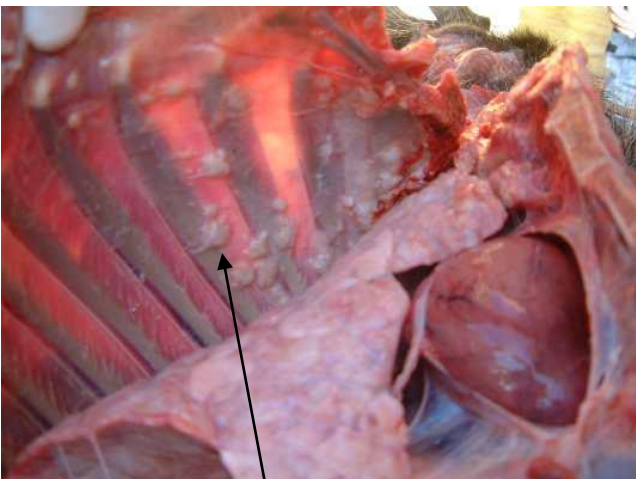


photo ULG

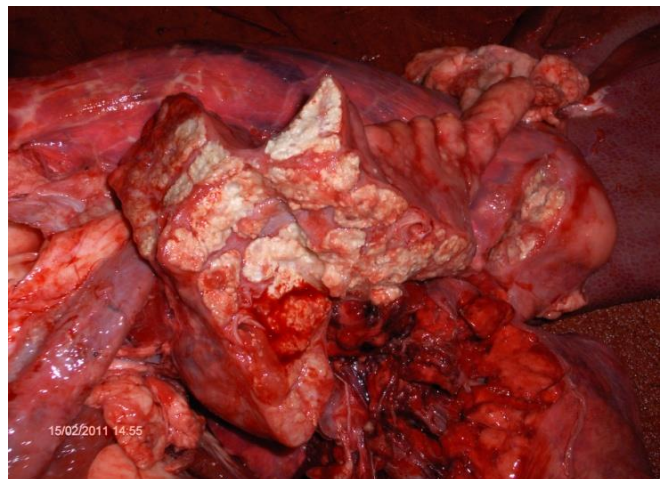
Foie avec « milkspot » – animal sain (sanglier)



Tuberculose : ganglions mésentériques (sanglier)



Tuberculose pleurale (sanglier)



Tuberculose sévère abcédée : poumon (sanglier)

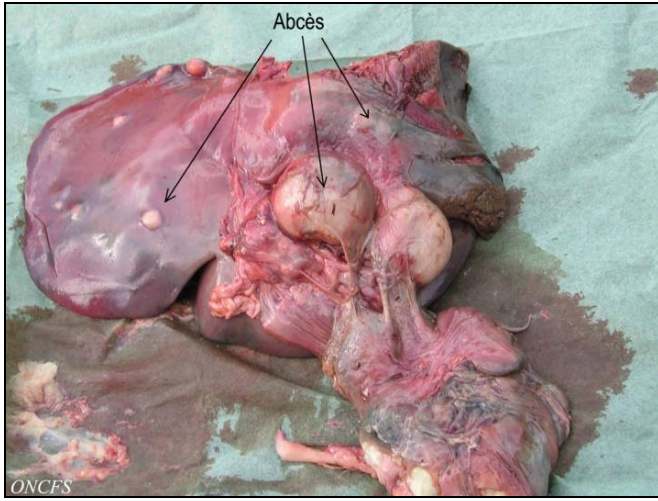


Tuberculose : ganglions de la tête (sanglier)

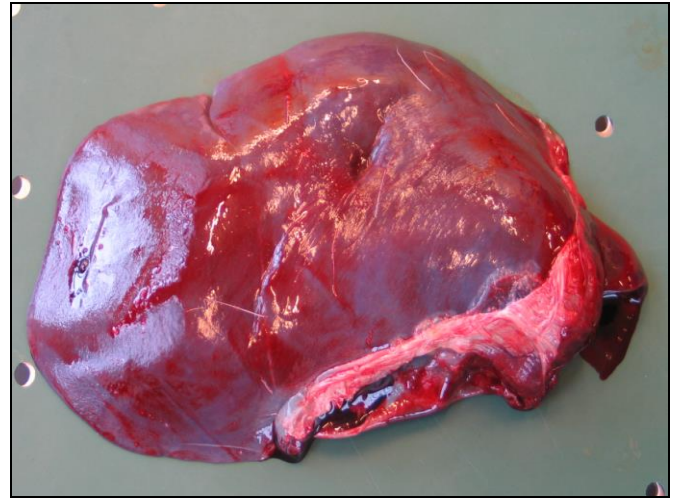


Carcasse ouverte - animal sain (sanglier)

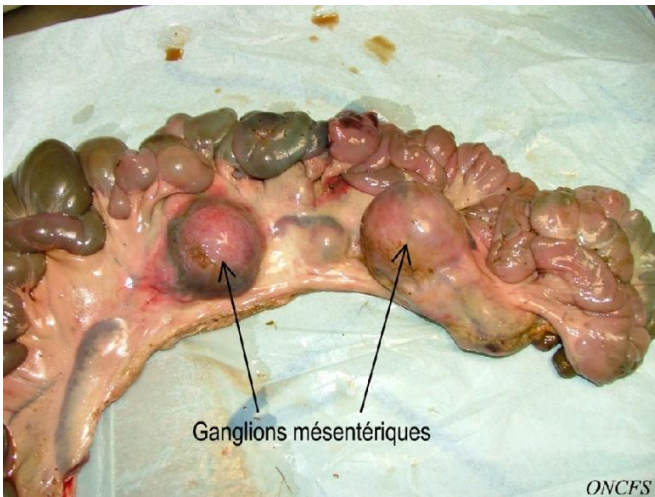
Tuberculose cervidés



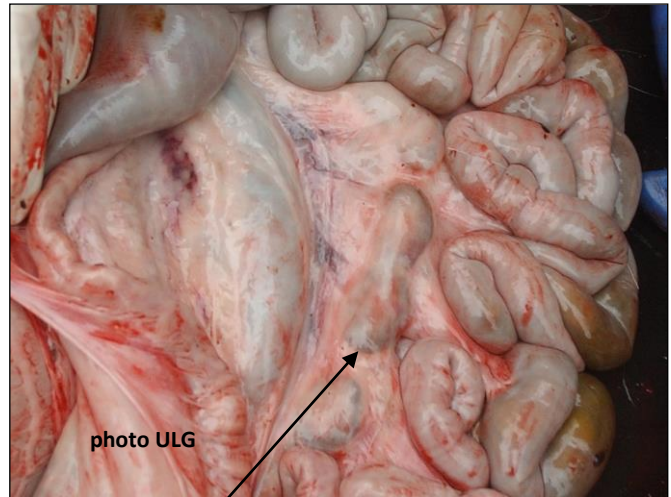
Tuberculose hépatique (cerf)



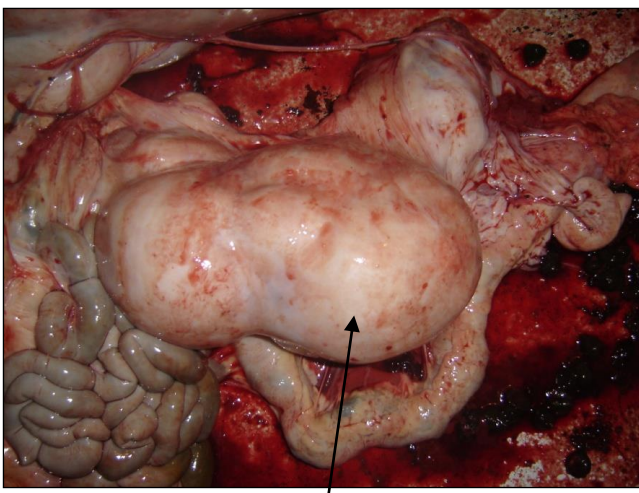
Foie sain (cerf)



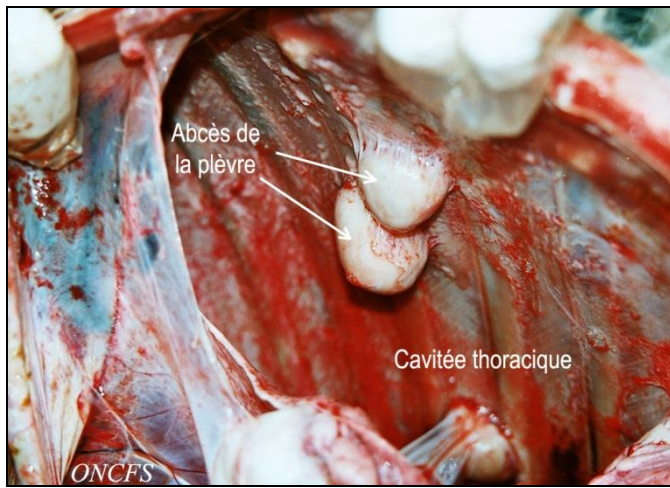
Tuberculose : ganglions mésentériques (biche)



Intestin (ganglions mésentériques) – animal sain (cerf)



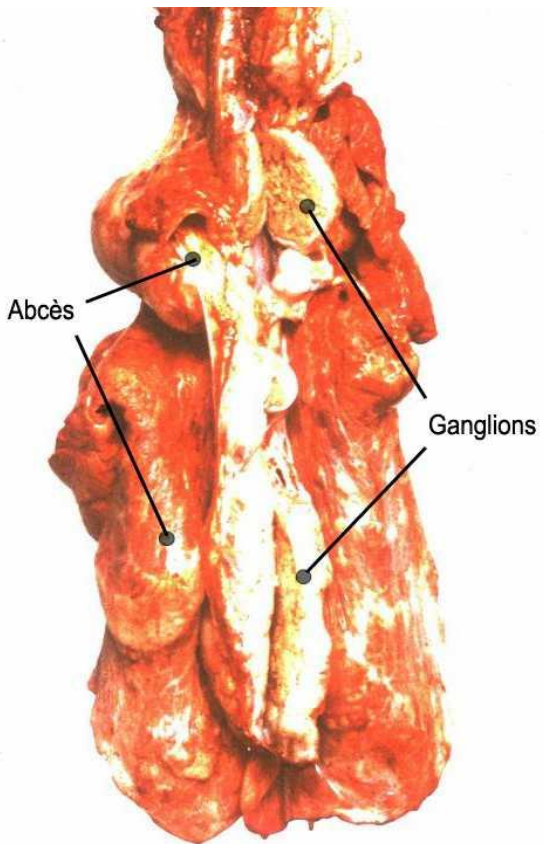
Tuberculose : abcès mésentérique (tractus digestif d'un cerf)



Tuberculose pleurale (cerf)



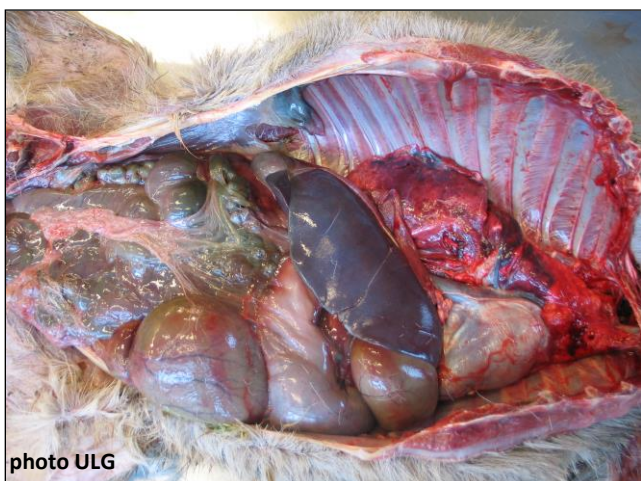
Cavité thoracique – animal sain (cerf)



Tuberculose sévère du poumon (cerf)



Poumons sains (cerf)



Carcasse ouverte - animal sain (cerf)